

**Effects of a high DHA multi-nutrient supplement and exercise on mobility and cognition in older women (MOBILE): A randomised semi-blinded placebo controlled study**

Journal:	<i>British Journal of Nutrition</i>
Manuscript ID	BJN-RA-19-0966.R1
Manuscript Type:	Research Article
Date Submitted by the Author:	24-Jan-2020
Complete List of Authors:	Fairbairn, Paul; Bournemouth University, Health and Social Sciences Tsofliou, Fotini; Bournemouth University, Faculty of Health and Social Sciences Johnson, Andrew ; Bournemouth University, Department of Psychology Dyall, Simon; Roehampton University, Department of Life Science
Keywords:	Docosahexaenoic acid, B Vitamins, Physical Activity, Gait, Memory
Subject Category:	Human and Clinical Nutrition

SCHOLARONE™  
Manuscripts

Effects of a high DHA multi-nutrient supplement and exercise on mobility and cognition in older women (MOBILE): A randomised semi-blinded placebo controlled study

Paul Fairbairn <sup>a\*</sup>, Fotini Tsofliou <sup>a</sup>, Andrew Johnson <sup>b</sup>, and Simon C. Dyll <sup>c</sup>

<sup>a</sup> Department of Rehabilitation and Sport Sciences, Bournemouth University, U.K.

<sup>b</sup> Department of Psychology, Bournemouth University, U.K.

<sup>c</sup> Department of Life Sciences, University of Roehampton, U.K.

\*Corresponding author:

Paul Fairbairn

Tel: +44 (0)7871 319620

Email: pfairbairn@bournemouth.ac.uk

**Running title:** Multi-nutrient exercise mobility cognition

**Key Words:** Docosahexaenoic acid<sub>1</sub>, Memory<sub>2</sub>, B Vitamins<sub>3</sub>, Physical Activity<sub>4</sub>, Gait<sub>5</sub>

## Abstract

There is a complex interplay between mobility and cognition in older adults. We have previously shown that a high DHA multi-nutrient supplement improves habitual walking speed, verbal memory, and psychomotor response latency in older women. Exercise also improves mobility and cognition in older adults, and omega-3 fatty acids and exercise share a range of overlapping biological effects. This study examined for the first time the effects of the high DHA multi-nutrient supplement and aerobic exercise on mobility and cognition in older women. Women (mean age 67 y, SD 8) were assigned to the following groups: multi-nutrient (1 g DHA, 160 mg EPA, 240 mg *Ginkgo biloba*, 60 mg phosphatidylserine, 20 mg d- $\alpha$  tocopherol, 1 mg folic acid, and 20  $\mu$ g vitamin B12 per day, N=13), multi-nutrient and exercise (spin class twice per week, N=14), exercise and placebo (N=12), or placebo (N=12). The multi-nutrient was given for 24 weeks, and exercise for 12 weeks. Trial registration: NCT03228550. No treatment effects were observed for the primary outcome, habitual walking speed. Improvements in verbal memory and executive function were seen for all treatments groups versus placebo (all,  $p < 0.05$ ). Significant improvements in self-reported emotional wellbeing were seen with multi-nutrient and exercise groups versus placebo ( $p = 0.03$ ). The results suggest that the high DHA multi-nutrient supplement produces similar improvements in cognitive function to aerobic exercise, offering the intriguing prospect that supplementation may be able to mitigate some of the effects of low physical activity on cognitive function in the elderly.

## 43    **Introduction**

44    Ageing is associated with a progressive decline in both cognitive and physical function,  
45    which can lead to a number of age-related health conditions including frailty and dementia <sup>(1)</sup>.  
46    Walking is a complex task with a significant cognitive aspect, and changes in several gait  
47    parameters including speed often coexist with or precede the onset of cognitive decline in  
48    older adults <sup>(2)</sup>. Gait speed is a clinically relevant marker in older adults, due to strong  
49    associations with physical functioning and disability <sup>(3)</sup>. Previous work in our laboratory  
50    suggests a high docosahexaenoic acid (DHA) multi-nutrient supplement providing the  
51    omega-3 polyunsaturated fatty acids (PUFAs), DHA and eicosapentaenoic acid (EPA), and  
52    supporting nutrients phosphatidylserine (PS), d- $\alpha$  tocopherol, folic acid, vitamin B12, and  
53    *Ginkgo biloba*, improves cognition and mobility in older females <sup>(4)</sup>.

54  
55    Providing omega-3 PUFAs in combination with other compounds indicated to support brain  
56    function may provide greater efficacy than if supplemented in isolation, although results are  
57    so far mixed. For example, the same multi-nutrient supplement as used in our previous and  
58    present studies did not improve cerebral hemodynamic or cognitive function in healthy older  
59    adults <sup>(5)</sup>; however, the authors acknowledge that the cognitive tests were selected on the  
60    basis that they are able to activate the prefrontal cortex, and may not be sensitive to the  
61    components in the supplement. Similarly, an omega-3 PUFA multi-nutrient supplement  
62    showed no significant effects on a battery of cognitive tests of participants with prodromal  
63    Alzheimer's disease, although improvements were seen in secondary outcomes of cognitive  
64    function and hippocampal atrophy <sup>(6)</sup>.

65

Aerobic exercise has consistently been shown to improve both mobility and cognition in older adults <sup>(7)</sup>. Omega-3 PUFAs and exercise share a range of overlapping biological effects, including enhancing neurogenesis, neural plasticity, and reducing inflammation <sup>(8, 9)</sup>. Indeed, preliminary evidence suggests combining omega-3 PUFAs with exercise may provide additional benefit when compared to either approach alone. For example, omega-3 PUFA supplementation combined with twice weekly stationary cycle training and cognitive stimulation led to an enhanced reduction of brain atrophy in grey matter regions compared to supplementation <sup>(10)</sup>. Similarly, combining omega-3 PUFA supplementation with resistance training in older females provided an additional benefit to muscle strength compared with the exercise alone <sup>(11)</sup>. In addition, an omega-3 PUFA multi-nutrient supplement combined with exercise was recently shown to improve verbal recall and executive function in older men, more than supplementation alone <sup>(12)</sup>. The mechanisms underpinning these interactions are currently unclear, as the studies were not been designed to elucidate these effects. However, decreasing Hcy levels may be a potential factor, as omega-3 PUFAs regulate the expression of genes encoding enzymes involved in Hcy metabolism <sup>(13)</sup> and exercise decreases Hcy levels <sup>(14)</sup>.

The aim of this study is to further our initial observations and examine for the first time the effects of the multi-nutrient supplement and aerobic exercise on mobility and cognition in older women. The study was restricted to female participants to enable comparison with our previous work <sup>(4)</sup>, and it has been suggested that the additive effects of combining exercise and omega-3 PUFA supplementation may be limited to women only <sup>(11)</sup>. Women have also been shown to have a greater compliance to exercise interventions <sup>(15)</sup>. Habitual gait speed was the primary outcome, with secondary outcomes related to mobility, cognition, and quality of life <sup>(16)</sup>.

**Methods**

The study is a randomised semi-blinded, placebo controlled trial in women aged 60 years and above with a factorial design. Detailed information of the study procedure has been previously published <sup>(17)</sup>, in line with guidelines of the Template for Intervention Description and Replication <sup>(18)</sup>. This study was conducted according to the guidelines laid down in the Declaration of Helsinki and all procedures involving human subjects/patients were approved by the Bournemouth University Science Technology and Health research ethics panel (Ethics ID 10788). Prior to data collection participants provided written informed consent. The trial was listed on [www.clinicaltrials.gov](http://www.clinicaltrials.gov) (NCT03228550), and follows the Consolidated Standards of Reporting Trials (CONSORT) statement on randomised trials <sup>(19)</sup>. All data was collected and analysed at Bournemouth University, U.K.

**Participants**

Females aged 60 years and above were recruited according to the following inclusion criteria: (1) able to walk at least 50 m unaided, (2) classified as non-frail or pre-frail <sup>(20)</sup>, and (3) community dwelling. Exclusion criteria were: (1) vestibular impairments, (2) diagnosed neurological disorder, (3) cognitive impairment (Mini Mental Status Examination score <24), (4) lower limb surgery, (5) seafood allergy, (6) regular consumption of multivitamin or fish oil supplements within six months prior to baseline measurements, and (6) previously received advice from a health care professional not to undertake strenuous exercise. A stratified block randomisation design was followed based on frailty classification of non-frail or pre-frail, followed by permuted block randomisation. Participant demographics can be found in Table 1. For further information please refer to the published protocol <sup>(17)</sup>.

## Interventions

Participants were allocated to one of four groups: multi-nutrient supplement and exercise (MS+EX), placebo supplement and exercise (P+EX), multi-nutrient supplement only (MS), or placebo supplement only (P).

## Dietary supplement

Participants received four capsules per day of their respective dietary supplement for 24 weeks. The daily dose from the active capsules contained 1000 mg DHA, 160 mg EPA, 20 µg vitamin B12, 1 mg folic acid, 124 mg PS, 240 mg *Ginkgo biloba* standardized leaf extract, and 20 mg vitamin E. The placebo capsules contained an isocaloric oil blend typical of the U.K. diet including a small amount of fish oil. A small amount of fish oil was added to the placebo capsules to aid with participant blinding, which provided a daily dose of 21.6 mg EPA and 14.4 mg DHA, an amount unlikely to produce any therapeutic benefit (Supplementary Table 1). Participants were told to take their capsules with the largest meal of the day. The capsules were coded by the Principal Investigator (PI), who had no involvement in the data collection, and all subsequent operational oversight and interpretation of the data was undertaken with the PI blinded to specific participant codes. Compliance to the dietary supplement was measured by changes in whole-blood DHA levels compared to baseline, counting returned pills at 12 and 24 weeks, and exit questionnaire. Adverse events were monitored by subject self-reporting and exit questionnaire.

## Exercise

The exercise intervention consisted of two group sessions per week on a Spinner Fit stationary bike. Classes lasted 30 min for the first six weeks and increased to 45 min for the

second six weeks, with five min warm up and cool down at 7-8 on the Borg scale of rate of perceived exertion. During the main body of the sessions participants maintained an intensity of 12-14 on the Borg scale. Compliance to the exercise intervention was monitored by recording attendances by each participant and calculated as the percentage of classes attended.

## **Outcome measures**

The outcome measures were based on changes in mobility, cognitive function and health related quality of life, with the primary outcome measure change in habitual walking speed. Information on the age, Body Mass Index (BMI), verbal intelligence, and medication use were collected from each participant. Information on medications was self-reported, with both type and number of medications recorded. The National Adult Reading Test (NART) was used to assess verbal intelligence. All measurements were performed at baseline and end of the study.

## **Mobility**

Participants were assessed under three gait conditions: habitual walking, fast walking, and dual task (DT) walking. During the DT participants were required to count backwards in integers of three from a randomly generated three digit number, and were not instructed to prioritise either walking or counting backwards during the task. Gait speed was measured using Opal inertial sensors and analysed using Mobility Lab™ software version 3.1 (APDM Inc, <http://apdm.com>). Sensors were placed over the shoes. Each tested condition was repeated five times and the mean value for each trial used for habitual and DT gait with the maximum gait speed value being used for fast walking. The five times sit to stand (5TSTS) test was used to assess dynamic balance and functional mobility.



## Cognition

A Stroop test was used to assess interference control using Open Sesame version 3.1.1. software <sup>(21)</sup>. Participants were presented names of one of four colours: blue, red, green, and white, in four different font colours varying between these colours. Participants were required to identify the colour of the text. Interference control was defined as the difference between the mean time taken to respond to the congruent and non-congruent trials. Spatial memory was also assessed using Open Sesame software, based upon Nagamatsu and colleagues <sup>(22)</sup>. Each trial comprised presentation of three dots at randomly allocated locations for 500 ms, followed by a fixation cross for three seconds. The test comprised presentation of a single red dot on the screen, either in the same location (match) or a different (non-match) location, and participants had to identify if the test dot was match or non-match. The Rey's Auditory Verbal Learning Test (RAVLT) was used to assess verbal memory, where participants were required to recall a list of 15 pre-set words <sup>(23)</sup>. The trail making task was used to assess executive function <sup>(24)</sup>, where participants drew lines between targets on a piece of paper, as rapidly as possible, under four different conditions: (1) numbers condition (one to 49), (2) letters condition, (A to Z), (3) alternated numbers (one to 25) and letters (A to X), and (4) alternated letters (A to Y) and numbers (one to 24). Scores were recorded as the total number of correct connections.

## Health related quality of life

The short form 36 questionnaire (SF-36) was used to assess health related quality of life <sup>(25)</sup>.

## Biochemical measures

Biochemical measures were conducted to assess compliance to the supplementation and to better understand how changes may contribute towards any therapeutic effects on the measured outcomes. Finger pin-prick blood samples were collected and total fatty acid content analysed, as described previously <sup>(26)</sup>. Individual fatty acids were quantified using a gas chromatograph with flame ionisation detector (Agilent Technologies, U.S.A), and expressed as % of total fatty acids. A non-fasted venous blood sample was drawn to assess serum Hcy. Each sample was allowed to clot and immediately centrifuged at 2000 x g for 10 min at 4°C and serum extracted. Samples were stored at -80°C and analysed within three months. Hcy levels were measured by competitive enzyme-linked immunosorbent assay (ELISA) (Cell Biolabs Inc.) according to manufacturer's instructions.

## Diet and lifestyle

Participants' diet and lifestyle habits were monitored. Three day food diaries were used and results analysed using Nutritics dietary analysis software ([www.nutritics.com](http://www.nutritics.com)). A validated food frequency questionnaire (FFQ) was used to quantify omega-3 PUFA intake <sup>(27)</sup>. The community health activities program for seniors (CHAMPS) questionnaire was used to assess physical activity levels. These measures were taken so that baseline diet and physical activity habits could be included as covariates and to monitor whether there were any significant changes in diet and lifestyle during the course of the intervention period.

## Statistical analysis

Statistical analyses were performed using IBM SPSS statistics version 21 (Chicago, USA). Sample size was determined based on the primary outcome of habitual walking speed. Using an effect size based on previously published values, minimally significant changes in gait

speed were 0.03 m/s and 0.05 m/s with substantial changes at 0.08 m/s <sup>(28)</sup>. The sample size calculation was based on a difference of 0.08 m/sec with the level of variability set at 0.1 based on our previous work <sup>(4)</sup> with a minimum sample size of 13 participants per group required to detect an effect size  $d$  of 0.5. In our original protocol a large effect size was suggested; however, this was subsequently changed to a medium effect size based on our previous pilot study <sup>(4, 17)</sup>. Data were tested for normal distribution using Shapiro-Wilk test and Q-Q-plots and Levenes test of equality of error variances to check for assumptions of homogeneity. Correlations between mobility, cognitive function, and health related quality of life, exercise, circulating omega-3 PUFAs and Hcy were examined using partial correlations, controlling for age, BMI and dietary protein. For any variables that did not meet the assumptions of normality for partial correlations a syntax was used to produce a non-parametric partial correlation. This method consisted of using the NONPAR CORR and /MATRIX OUT commands to produce a Spearman Rho matrix, which could then be read by the /MATRIX IN and PARTIAL CORR command whilst factoring in the appropriate covariates. For all correlation analysis a sample size of 46 was required to achieve a power of 0.80 for a correlation coefficient of 0.40 and an  $\alpha$  of 0.05 <sup>(29)</sup>. Evidence suggests a non-linear relationship between Hcy and health of older adults <sup>(30)</sup>, therefore non-parametric correlation analysis was performed. NART score was included as a covariate in preliminary analysis, but was excluded in final models.

Baseline and 24 week results from the diet and physical activity assessments were compared within groups, using paired T-tests. A general linear model was used to compare the active intervention groups versus the placebo over time (from pre- to post-measurement) on changes on the dependent variables on an intention to treat basis. Effect size calculation ( $\eta^2$  (Eta squared)) was performed. Demographic and health information, such as age, and BMI were included as covariates in the analysis if they were significantly correlated with the dependent

variable. The Benjamini-Hochberg procedure was used to decrease the false discovery rate and probability of type I errors, with a Q value of <0.25 accepted as significant, and all P values are expressed as raw values <sup>(31)</sup>. Linear regression we used to identify whether a difference in whole-blood DHA was associated with a change in outcome score. All results are expressed as means (SD). Pre-trial registration plans dictated that a 2 x 2 ANOVA would be conducted to examine treatment effects, however due to the potential interaction between the supplementation and exercise independence of these variables could not be guaranteed, thus examining treatment effects based on the assigned groups was determined to be a more robust method. Correlation analysis was used to identify whether a difference in whole-blood DHA was associated with a change in outcome score. All results are expressed as means (SD).

## Results

Participant flow is shown in Fig 1. The study had three separate intakes of participants, starting in March 2017, May 2017, and February 2018, with data collection taking place between March 2017 and January 2019. In total 60 participants were allocated to intervention groups and 51 completed the study. Analyses were conducted on all who completed the study with no exclusions irrespective of compliance or protocol violations. Participants who withdrew during the study were invited to attend follow up assessment; however, the invitations were declined. Role limitations due to physical health problems, role limitations due to emotional health problems, and social functioning from the SF-36 questionnaire showed clear signs of ceiling effects, therefore these were omitted from analysis. Hcy data was only available for 48 baseline values. Upon inspection four results of the baseline whole-blood DHA levels were identified as unreliable and were subsequently excluded from the analysis.

The group baseline characteristics are shown in Table 1. There were no reported adverse effects in any group over the study. The multi-nutrient supplementation led to significant increases in DHA and EPA compared to baseline levels in the MS (28% and 190%, respectively) and MS+EX (43% and 140%, respectively) groups, and significant decreases in the omega-6 PUFA, arachidonic acid levels of -28% and -26%, respectively, all  $p < 0.05$ , Table 2. Compliance to the supplementation measured via changes in DHA and was 91% for MS+EX, and 80% for MS, 100% for P+EX and 100% for P, which was corroborated by capsule counting. Compliance to the exercise intervention was 55% for MS+EX and 56% for P+EX, which is consistent with other exercise intervention trials in a similar demographic <sup>(22)</sup>. There were no significant changes in reported calorie, macronutrient or omega-3 PUFA intake between baseline and follow up, Table 2. Participants maintained their current use of medications and there were no reported changes health status throughout the duration of the study with the exception of two participants in the MS+EX who discontinued their use of analgesic and anti-inflammatory medications.

### Primary outcome measure

There was a non-significant decrease of 0.8% in the mean habitual walking speed by the P group over the study; whereas, the other groups increased their mean walking speed by 0.05 m/s (0.07 m/s) (4.0%) for the MS group, 0.03 m/s (0.09 m/s) (2.5%) for the P+EX group, and 0.01 m/s (0.12 m/s) (0.8%) for the MS+EX group. However, these changes were not statistically significant for supplementation ( $p = 0.25$ ), exercise ( $p = 0.50$ ) or for the combined intervention ( $p = 0.79$ ), Fig 2.

## Secondary outcome measures

The results for the effects of the interventions on mobility, cognition, and health related quality of life are summarised in Table 3. There was a significant effect on verbal memory compared with the P group, by the MS [ $F(1,46) = 7.59, p = 0.008$ , partial  $\eta^2$  0.144], P+EX [ $F(1,46) = 7.70, p = 0.008$ , partial  $\eta^2$  0.144] and MS+EX interventions [ $F(1,46) = 15.82, p < 0.001$ , partial  $\eta^2$  0.256], all with large effect sizes, Fig 3. Significant effects versus placebo were also observed for executive function for the MS [ $F(1,47) = 8.02, p = 0.007$ , partial  $\eta^2$  0.146], P+EX [ $F(1,47) = 8.37, p = 0.006$ , partial  $\eta^2$  0.151], and MS+EX groups [ $F(1,47) = 8.60, p = 0.005$ , partial  $\eta^2$  0.155] all with large effect sizes, Fig 4. The MS+EX group also reported significant improvements in emotional wellbeing, compared to the P group [ $F(1,47) = 8.07, p = 0.03$ , partial  $\eta^2$  0.146], with a large effect size. No significant treatment effects were observed for the other outcomes.

## Correlations of outcomes with DHA status and Serum Hcy

Significant baseline relationships between DHA and DT gait speed  $r(53) = 0.32, p = 0.018$ , bodily pain  $r(51) = 0.35, p = 0.013$  and emotional wellbeing  $r(51) = 0.30, p = 0.032$  from the SF-36 questionnaire were identified. These relationships were moderate to weak in strength. There were no significant associations between DHA and any cognitive outcomes. Following the interventions there was a direct relationship between changes in verbal memory and DHA levels,  $r(18) = 0.66, p = 0.001$ , Fig 5, however no relationship was detected for changes in executive function. At baseline there were no significant associations between serum Hcy and any of the outcome measures (Supplementary Table 2).

## Discussion

The MOBILE study explores for the first time the effects of a high DHA multi-nutrient supplement and aerobic exercise on mobility and cognition in older women. Although the supplementation led to significant increases in DHA levels, there were no significant improvements in the primary outcome measure of habitual walking speed. However, significant improvements in verbal memory and executive function were seen following the interventions, with the improvements in verbal memory in direct relation to increases in whole-blood DHA levels. Furthermore, lower circulating DHA was associated with poorer DT performance, and measures of pain and emotional wellbeing at baseline.

Significant improvements in habitual walking speed were previously shown by us following treatment with the same multi-nutrient supplement, reflecting clinically relevant improvements within a similar sample size <sup>(4)</sup>. These improvements were driven by both improvements in the treatment group and decreases in the placebo group. However, in the present study although there were increases following the multi-nutrient supplementation of a similar magnitude to our previous study, the decline in the placebo group was much less than predicted, with a mean decline of 0.8%, as opposed to 2% in our previous study <sup>(32)</sup>, which may reflect a high functioning nature of the participants. Indeed, the lack of improvement following the exercise intervention supports this hypothesis, as aerobic exercise has consistently been shown to improve walking speed <sup>(33, 34)</sup>. Interestingly the effect size for the combined supplementation and exercise group was modest in comparison to each intervention on their own however this may be partly explained by the aforementioned participants who discontinued daily use of analgesic and anti-inflammatory for joint pain who both observed small declines in gait speed of 0.01 m/s.

332 The individual and combined interventions led to improvements in verbal memory, with the  
333 total recall across the trials representing eight to twelve more words remembered than the  
334 placebo group. These findings corroborate previous observations showing positive effects on  
335 verbal memory following treatment with the same multi-nutrient supplement <sup>(4)</sup>. Similarly,  
336 the improvements following exercise are consistent with previous research <sup>(7)</sup>. The individual  
337 and combined interventions also resulted in significantly improved executive function. The  
338 observation of exercise improving this cognitive domain is consistent with previous  
339 experimental work <sup>(7)</sup>. There is currently no clear consensus in the literature as to whether the  
340 factors in the multi-nutrient supplement improve executive function in older adults. For  
341 example, 900 mg DHA for 24 weeks had no effect on executive function <sup>(35)</sup>, whereas 1320  
342 mg EPA and 880 mg DHA for 26 weeks produced significant improvements <sup>(36)</sup>. Similarly,  
343 although B vitamins <sup>(37)</sup> and *Ginkgo biloba* <sup>(38)</sup> do not appear to improve executive function,  
344 preliminary evidence suggests PS has some beneficial effects <sup>(39)</sup>. A recent study suggested an  
345 omega-3 PUFA multi-nutrient supplement combined with exercise improves executive  
346 function in older men <sup>(12)</sup>; however, as there was no exercise only control group the  
347 contribution of omega-3 PUFA multi-nutrient supplement to these effects cannot be  
348 identified. Indeed our analysis found no significant relationship between changes in blood  
349 level of DHA and the executive function suggesting that other factors may have contributed  
350 towards the change in this outcome.

351 Due to the small sample size analysis to detect superiority of the active interventions over one  
352 another was not possible. It may be hypothesised that the effects of the multi-nutrient  
353 supplement and exercise operate via overlapping biological mechanisms. This includes  
354 decreasing inflammation, for example, interleukin 6 (IL-6) levels are linked to declines in  
355 verbal memory <sup>(40)</sup>, and both omega-3 PUFAs and aerobic exercise have both been shown to  
356 decrease IL-6 levels <sup>(41)</sup>. Alternatively, exercise and factors in the multi-nutrient supplement,



such as DHA and *Ginkgo biloba* increase brain-derived neurotrophic factor (BDNF) levels, which may contribute to enhancing synaptic plasticity and cognitive function <sup>(42-44)</sup>. However, further work is needed to explore these potential mechanisms, if they mediate any of the observed effects and if indeed the combination of the two interventions can provide an additional benefit to the older adult.

Due to the range of compounds in the multi-nutrient supplementation it is not possible to ascribe the effects to any single factor, and the present results further support the use of a combination of dietary factors in aging <sup>(4, 45)</sup>. Unfortunately, due to methodological issues we were unable to monitor changes in serum Hcy levels over the study and so cannot identify the potential role of folic acid and vitamin B12 in the treatment effects. However, a major unifying factor in the multi-nutrient intervention is DHA, and the supplementation increased circulating DHA and EPA levels. To identify the potential contribution of DHA to the treatment effects correlations between changes in DHA and changes in outcome measures were performed. The increases in DHA levels over the study were in direct relation with improvements in verbal memory, suggesting increasing DHA was an important contributor to the treatment effects **on this outcome**. At baseline, significant relationships were seen with DHA and DT gait speed, although no other measures of mobility or cognition. **Previous observations suggest circulating DHA levels correlate with gait and mobility outcomes <sup>(4, 46)</sup>, although erythrocyte DHA and EPA was not shown to be associated with a slower decline in gait speed over three years in a fully adjusted model <sup>(47)</sup>**. The results from the present study do provide some further support for DHA status as a potential blood biomarker for monitoring physical performance in aging, although further work is needed to establish this link more clearly.

The strengths of this study are that it was randomised, placebo controlled semi-blinded design, with high retention rate, thereby increasing the reliability of the data. The study used

a range of detailed and sensitive mobility and cognitive tests to assess treatment effects. It is important in this type of study to monitor participant's dietary intake and physical activity; these were assessed by diet diary and FFQ, and CHAMPS questionnaire, respectively. This meant it could be confirmed that the participants diet and physical activity outside of the interventions remained consistent. The only notable, although not statistically significant, change in diet was a decrease in fat intake across all four groups; however we have no reason to believe this decrease across the groups would have influenced the results of the analysis. Furthermore, the trial design was reviewed and made publicly available on a clinical trials registry and was subject to peer review during the protocol publication process. Additionally, blood fatty acid levels were taken at the start and end of the study, to monitor absorption and incorporation of the omega-3 PUFAs. Limitations were the low recruitment, and high functional ability of the participants. A further limitation was that ApoE genotype was not assessed, as this may affect participant's response to the supplementation <sup>(48)</sup>, and is associated with gait speed decline in aging <sup>(49)</sup>.

## Conclusions

Overall, these results suggest that the multi-nutrient supplement produces similar improvements in verbal memory and executive function to aerobic exercise, offering the intriguing prospect that supplementation may be able to mitigate some of the effects of low physical activity on cognitive function in the elderly. These improvements are clinically relevant and were identified in able female adults. Treatment effects were not identified in the primary outcome, nonetheless the improvements in verbal memory and executive function does provide some promising insight into the benefits of dietary supplementation and exercise for the promotion of healthy ageing. The study identified for the first time

relationships between DHA and DT ability. Further work should seek to explore the effects of the supplement on participants who may be most likely to respond, i.e. those with low DHA and high Hcy levels, and also explore supplementation for a longer period, or in a more frail population.

### **Funding**

This work was supported by Bournemouth University, and grants from Efamol Ltd and Sylvia Waddilove Foundation Trust.

### **Acknowledgements**

The authors wish to express their thanks to all the participants. We would also like to thank Tom Wainwright of the Orthopaedic Research Institute, Bournemouth University, for helpful conversations aiding in development of the exercise program, and Isabell Nessel for overseeing some of laboratory work.

### **Conflict of Interest**

The authors declare no financial conflicts of interest.

### **Declaration of Ethical Standards**

Ethical approval was granted by Bournemouth University Science Technology and Health research ethics panel (Ethics ID 10788) and the study conformed to the declaration of Helsinki and guidelines for Good Clinical Practice.

**Author Contributions**

SD developed the research question. SD, AJ and FT developed the study design. PF developed the measurements of the study and SD and FT acted as methodological council. SD, FT and AJ edited and revised the study protocol. PF was responsible for the final content of the paper and all authors have read and approved the final manuscript.

**References**

1. Cesari, M., et al., *Sarcopenia and Physical Frailty: Two Sides of the Same Coin*. Frontiers in Aging Neuroscience, 2014. **6**: p. 192.
2. Savica, R., et al., *Comparison of Gait Parameters for Predicting Cognitive Decline: The Mayo Clinic Study of Aging*. J Alzheimers Dis, 2016.
3. Montero-Odasso, M., et al., *Gait velocity as a single predictor of adverse events in healthy seniors aged 75 years and older*. J Gerontol A Biol Sci Med Sci, 2005. **60**(10): p. 1304-9.
4. Strike, S.C., et al., *A High Omega-3 Fatty Acid Multinutrient Supplement Benefits Cognition and Mobility in Older Women: A Randomized, Double-blind, Placebo-controlled Pilot Study*. J Gerontol A Biol Sci Med Sci, 2016. **71**(2): p. 236-42.
5. Jackson, P.A., et al., *DHA Supplementation Alone or in Combination with Other Nutrients Does not Modulate Cerebral Hemodynamics or Cognitive Function in Healthy Older Adults*. Nutrients, 2016. **8**(2): p. 86.
6. Soininen, H., et al., *24-month intervention with a specific multinutrient in people with prodromal Alzheimer's disease (LipiDiDiet): a randomised, double-blind, controlled trial*. Lancet Neurol, 2017. **16**(12): p. 965-975.
7. Smith, P.J., et al., *Aerobic exercise and neurocognitive performance: a meta-analytic review of randomized controlled trials*. Psychosom Med, 2010. **72**(3): p. 239-52.
8. Dylla, S.C., *Long-chain omega-3 fatty acids and the brain: A review of the independent and shared effects of EPA, DPA and DHA*. Frontiers in Aging Neuroscience, 2015. **7**(52).
9. Ryan, S.M. and Y.M. Nolan, *Neuroinflammation negatively affects adult hippocampal neurogenesis and cognition: can exercise compensate?* Neurosci Biobehav Rev, 2016. **61**: p. 121-31.

10. Kobe, T., et al., *Combined omega-3 fatty acids, aerobic exercise and cognitive stimulation prevents decline in gray matter volume of the frontal, parietal and cingulate cortex in patients with mild cognitive impairment*. Neuroimage, 2016. **131**: p. 226-38.
11. Da Boit, M., et al., *Sex differences in the effect of fish-oil supplementation on the adaptive response to resistance exercise training in older people: a randomized controlled trial*. Am J Clin Nutr, 2017. **105**(1): p. 151-158.
12. Bell, K.E., et al., *A Multi-Ingredient Nutritional Supplement in Combination With Resistance Exercise and High-Intensity Interval Training Improves Cognitive Function and Increases N-3 Index in Healthy Older Men: A Randomized Controlled Trial*. Front Aging Neurosci, 2019. **11**: p. 107.
13. Huang, T., et al., *Effect of polyunsaturated fatty acids on homocysteine metabolism through regulating the gene expressions involved in methionine metabolism*. ScientificWorldJournal, 2013. **2013**: p. 931626.
14. Vincent, K.R., et al., *Homocysteine and lipoprotein levels following resistance training in older adults*. Prev Cardiol, 2003. **6**(4): p. 197-203.
15. Kelley, G.A. and K.S. Kelley, *Dropouts and Compliance in Exercise Interventions Targeting Bone Mineral Density in Adults: A Meta-Analysis of Randomized Controlled Trials*. Journal of Osteoporosis, 2013. **2013**: p. 250423.
16. Lara, J., et al., *Towards measurement of the Healthy Ageing Phenotype in lifestyle-based intervention studies*. Maturitas, 2013. **76**(2): p. 189-99.
17. Fairbairn, P., et al., *Combining a high DHA multi-nutrient supplement with aerobic exercise: Protocol for a randomised controlled study assessing mobility and cognitive function in older women*. Prostaglandins Leukot Essent Fatty Acids, 2019. **143**: p. 21-30.
18. Hoffmann, T.C., et al., *Better reporting of interventions: template for intervention description and replication (TIDieR) checklist and guide*. Bmj, 2014. **348**: p. g1687.
19. Schulz, K.F., D.G. Altman, and D. Moher, *CONSORT 2010 statement: updated guidelines for reporting parallel group randomised trials*. PLoS Med, 2010. **7**(3): p. e1000251.
20. Fried, L.P., et al., *Frailty in older adults: evidence for a phenotype*. J Gerontol A Biol Sci Med Sci, 2001. **56**(3): p. M146-56.
21. Mathot, S., D. Schreij, and J. Theeuwes, *OpenSesame: an open-source, graphical experiment builder for the social sciences*. Behav Res Methods, 2012. **44**(2): p. 314-24.
22. Nagamatsu, L.S., et al., *Physical activity improves verbal and spatial memory in older adults with probable mild cognitive impairment: a 6-month randomized controlled trial*. J Aging Res, 2013. **2013**: p. 861893.
23. Rey, A., *L'examen psychologique dans les cas d'encéphalopathie traumatique. (Les problems.)*. Archives de psychologie, 1941.
24. Salthouse, T.A., et al., *Effects of aging on efficiency of task switching in a variant of the trail making test*. Neuropsychology, 2000. **14**(1): p. 102.
25. Brazier, J.E., et al., *Validating the SF-36 health survey questionnaire: new outcome measure for primary care*. Bmj, 1992. **305**(6846): p. 160-4.
26. De Rooy, L., H. Hamdallah, and S.C. Dyal, *Extremely preterm infants receiving standard care receive very low levels of arachidonic and docosahexaenoic acids*. Clin Nutr, 2016.
27. Sublette, M.E., et al., *Validation of a food frequency questionnaire to assess intake of n-3 polyunsaturated fatty acids in subjects with and without major depressive disorder*. J Am Diet Assoc, 2011. **111**(1): p. 117-123.e1-2.
28. Kwon, S., et al., *What is a meaningful change in physical performance? Findings from a clinical trial in older adults (the LIFE-P study)*. J Nutr Health Aging, 2009. **13**(6): p. 538-44.
29. Algina, J. and S. Olejnik, *Sample Size Tables for Correlation Analysis with Applications in Partial Correlation and Multiple Regression Analysis*. Multivariate Behav Res, 2003. **38**(3): p. 309-23.

- 512 30. Wong, Y.Y., et al., *Homocysteine, frailty, and all-cause mortality in older men: the health in*  
513 *men study*. J Gerontol A Biol Sci Med Sci, 2013. **68**(5): p. 590-8.
- 514 31. Benjamini, Y. and Y. Hochberg, *Controlling the False Discovery Rate: A Practical and Powerful*  
515 *Approach to Multiple Testing*. Journal of the Royal Statistical Society: Series B  
516 (Methodological), 1995. **57**(1): p. 289-300.
- 517 32. Alcock, L., N. Vanicek, and T.D. O'Brien, *Alterations in gait speed and age do not fully explain*  
518 *the changes in gait mechanics associated with healthy older women*. Gait Posture, 2013.  
519 **37**(4): p. 586-92.
- 520 33. Lee, C.W. and G.H. Cho, *Effect of stationary cycle exercise on gait and balance of elderly*  
521 *women*. J Phys Ther Sci, 2014. **26**(3): p. 431-3.
- 522 34. Henderson, R.M., et al., *Gait speed response to aerobic versus resistance exercise training in*  
523 *older adults*. Aging Clin Exp Res, 2017. **29**(5): p. 969-976.
- 524 35. Yurko-Mauro, K., et al., *Beneficial effects of docosahexaenoic acid on cognition in age-related*  
525 *cognitive decline*. Alzheimers Dement, 2010. **6**(6): p. 456-64.
- 526 36. Witte, A.V., et al., *Long-chain omega-3 fatty acids improve brain function and structure in*  
527 *older adults*. Cereb Cortex, 2014. **24**(11): p. 3059-68.
- 528 37. Clarke, R., et al., *Effects of homocysteine lowering with B vitamins on cognitive aging: meta-*  
529 *analysis of 11 trials with cognitive data on 22,000 individuals*. Am J Clin Nutr, 2014. **100**(2): p.  
530 657-66.
- 531 38. Snitz, B.E., et al., *Ginkgo biloba for preventing cognitive decline in older adults: a randomized*  
532 *trial*. JAMA, 2009. **302**(24): p. 2663-70.
- 533 39. Richter, Y., et al., *The effect of soybean-derived phosphatidylserine on cognitive performance*  
534 *in elderly with subjective memory complaints: a pilot study*. Clin Interv Aging, 2013. **8**: p. 557-  
535 63.
- 536 40. Beydoun, M.A., et al., *Cytokines are associated with longitudinal changes in cognitive*  
537 *performance among urban adults*. Brain Behav Immun, 2019. **80**: p. 474-487.
- 538 41. Zheng, G., et al., *Effect of Aerobic Exercise on Inflammatory Markers in Healthy Middle-Aged*  
539 *and Older Adults: A Systematic Review and Meta-Analysis of Randomized Controlled Trials*.  
540 Front Aging Neurosci, 2019. **11**: p. 98.
- 541 42. Janssen, C.I. and A.J. Kiliaan, *Long-chain polyunsaturated fatty acids (LCPUFA) from genesis*  
542 *to senescence: the influence of LCPUFA on neural development, aging, and*  
543 *neurodegeneration*. Prog Lipid Res, 2014. **53**: p. 1-17.
- 544 43. Belviranli, M. and N. Okudan, *The effects of Ginkgo biloba extract on cognitive functions in*  
545 *aged female rats: the role of oxidative stress and brain-derived neurotrophic factor*. Behav  
546 Brain Res, 2015. **278**: p. 453-61.
- 547 44. Chieffi, S., et al., *Neuroprotective Effects of Physical Activity: Evidence from Human and*  
548 *Animal Studies*. Front Neurol, 2017. **8**: p. 188.
- 549 45. Dunn-Lewis, C., et al., *A multi-nutrient supplement reduced markers of inflammation and*  
550 *improved physical performance in active individuals of middle to older age: a randomized,*  
551 *double-blind, placebo-controlled study*. Nutr J, 2011. **10**: p. 90.
- 552 46. Hutchins-Wiese, H.L., et al., *The impact of supplemental n-3 long chain polyunsaturated fatty*  
553 *acids and dietary antioxidants on physical performance in postmenopausal women*. J Nutr  
554 Health Aging, 2013. **17**(1): p. 76-80.
- 555 47. Fougere, B., et al., *Omega-3 fatty acid levels in red blood cell membranes and physical*  
556 *decline over 3 years: longitudinal data from the MAPT study*. Geroscience, 2017.
- 557 48. Hennebelle, M., et al., *Ageing and apoE change DHA homeostasis: relevance to age-related*  
558 *cognitive decline*. Proc Nutr Soc, 2013. **73**(1): p. 80-6.
- 559 49. Verghese, J., et al., *Role of APOE genotype in gait decline and disability in aging*. J Gerontol A  
560 Biol Sci Med Sci, 2013. **68**(11): p. 1395-401.

561

Figure 1 Participant flow through study

Figure 2 Effects of multi-nutrient supplement and exercise on the primary outcome of habitual gait speed. There were no significant effects for any intervention on changes in gait speed.

Figure 3 Effects of multi-nutrient supplement and exercise by general linear model on Rey's auditory verbal learning test. Significant effects for multi-nutrient supplement ( $p = 0.008$ ) placebo supplement and exercise ( $p = 0.008$ ) and combination of multinutrient and exercise ( $p < 0.001$ ). See text for further detail.

\* Indicates a significant effect of the intervention on changes in verbal memory versus placebo.

Figure 4 Effects of multi-nutrient supplement and exercise by general linear model on executive function. Significant effects for multi-nutrient supplement ( $p = 0.007$ ) placebo supplement and exercise ( $p = 0.006$ ) and combination of multinutrient and exercise ( $p < 0.005$ ). See text for further detail.

\* Indicates a significant effect of the intervention on changes in executive function versus placebo.

584 Figure 5 Scatter plot for changes in DHA and change in verbal memory for MS and P groups,  
585  $r(18) = 0.66, p = 0.001$ .

For Review Only



Table 1 Participant characteristics at baseline.

<b>Parameter</b>	<b>PL</b> <b>(N = 12)</b>	<b>PL + EX</b> <b>(N = 12)</b>	<b>MS</b> <b>(N = 13)</b>	<b>MS + EX</b> <b>(N = 14)</b>
<b>Age (years)</b>	67 (4)	67 (4)	69 (4)	68 (5)
<b>Height (m)</b>	1.63 (0.1)	1.64 (0.1)	1.62 (0.1)	1.61 (0.1)
<b>Weight (kg)</b>	69.5 (14.9)*	77.1 (33)*	75.6 (17.4)*	68.6 (11.1)*
<b>BMI (kg/m<sup>2</sup>)</b>	26.8 (5.2)*	27.8 (12.0)*	27.4 (5.3)*	28.6 (5.9)*
<b>Comorbidities</b>	Hypertension (2)	Hypertension (3)	Hypertension (2)	Hypertension (3)
	Hypercholesterolemia (1)	Osteoarthritis (1)	Hypercholesterolemia (1)	Hypercholesterolemia (2)
	Osteoarthritis (2)		Osteoporosis (1)	Diabetes (1)
				Osteoarthritis (2)
<b>NART Score</b>	36 (8)	36 (5)	37 (5)	36 (7)
<b>MMSE score</b>	30 (1)*	30 (0)*	30 (1)*	30 (2)*
<b>Hand Grip Strength (kg)</b>	20.5 (3.4)	21.0 (5.9)	19.3 (5.4)	19.0 (4.0)
<b>PASE Score</b>	114 (97)*	113 (30)*	111 (73)*	100 (55)*

\*Indicates value is the median (IQR), otherwise means (SD) presented.

Abbreviations: Mini Mental Sate Exam, MMSE; National Adult Reading Test, NART; Physical Activity Scale in the Elderly, PASE

For Review Only

Table 2: Participant compliance

Parameter	PL		PL+EX		MS		MS+EX	
	(N = 12) <sup>a</sup>		(N = 12)		(N = 13) <sup>b</sup>		(N = 14)	
	Baseline	24 weeks	Baseline	24 weeks	Baseline	24 weeks	Baseline	24 weeks
Fatty acid levels (% total fatty acids)								
<b>ARA</b>	6.6 (1.2)	6.3 (1.5)	6.7 (2.0)	6.9 (1.1)	7.1 (3.4)	5.1 (1.2)*	6.9 (2.0)	5.1 (1.4)*
<b>EPA</b>	0.4 (0.2)	0.4 (0.2)	0.4 (0.2)	0.4 (0.3)	0.3 (0.1)	0.9 (0.2)*	0.4 (0.2)	0.8 (0.4)*
<b>DHA</b>	1.7 (0.4)	1.6 (0.4)	1.7 (0.6)	1.5 (0.4)	1.8 (0.6)	2.3 (0.5)*	1.5 (0.4)	2.1 (0.6)*
Dietary intake per day								
<b>Kcal</b>	1869 (440)	1772 (518)	1530 (386)	1507 (310)	1642 (464)	1489 (439)	1738 (293)	1565 (339)
<b>Carbohydrate (g)</b>	190 (41)	180 (51)	156 (45)	154 (43)	175 (49)	168 (51)	175 (33)	164 (39)
<b>Protein</b>	1.12 (0.38)	1.11 (0.34)	0.91 (0.40)	0.91 (0.36)	1.00 (0.26)	0.93 (0.28)	1.09 (0.19)	0.96 (0.21)
<b>(g/kg bodyweight)</b>								
<b>Fat (g)</b>	84 (25)	76 (31)	68 (23)	62 (10)	67 (27)	63 (25)	73 (19)	66 (23)
Physical activity								
<b>CHAMPs (kcal)</b>	3619 (2159)	3390 (1686)	3454 (2009)	4011(2622)*	4314 (2328)	3945(2098)	3289 (1537)	3650 (1523)*

\* Indicates a significant change versus baseline, assessed using paired T-test or Wilcoxon signed-rank test where appropriate

<sup>a</sup> N = 10 and <sup>b</sup> N = 10 for whole-blood fatty acid value

Table 3 Secondary outcome measures displayed as mean (SD)

Parameter	PL		PL + EX		MS		MS + EX	
	(N = 12)		(N = 12)		(N = 13)		(N =14)	
	Baseline	24 weeks	Baseline	24 weeks	Baseline	24 weeks	Baseline	24 weeks
Mobility								
<b>Fast Walking Speed (m/s)</b>	1.8 (0.3)	1.7 (0.2)	1.6 (0.3)	1.6 (0.2)	1.6 (0.2)	1.6 (0.2)	1.7 (0.2)	1.7 (0.2)
<b>DT Gait Speed (m/s)</b>	0.9 (0.3)	1.0 (0.2)	1.1 (0.2)	1.1 (0.2)	1.0 (0.3)	1.0 (0.3)	1.2 (0.3)	1.2 (0.3)
<b>Five Times Sit to Stand (s)</b>	11.8 (2.1)	11.7 (2.3)	13.9 (3.9)	13.0 (3.0)	11.9 (2.1)	11.9 (2.2)	13.9 (3.9)	12.3 (2.6)
Cognition								
<b>Verbal Memory (%)</b>	58 (11)	54 (16)	61 (14)	67 (13)	54 (13.0)	60 (13)	58 (13)	67 (15)
<b>Spatial Memory (%)</b>	75 (7)	75 (6)	77 (5)	75 (6)	77 (7)	73 (7)	75 (7)	72 (10)
<b>Executive Function (Correct Connections)</b>	80 (18)	75 (19)	68 (21)	76 (23)	60 (15)	67 (21)	68 (18)	75 (15)
<b>Interference Control (ms)</b>	159 (90)	152 (77)	149 (96)	118 (104)	210 (106)	189 (104)	205 (198)	169 (148)
SF-36 Questionnaire								
<b>Physical Function</b>	79 (24)	78 (26)	75 (21)	79 (19)	82 (15)	83 (16)	75 (26)	77 (22)
<b>Bodily Pain</b>	75 (24)	73 (25)	75 (22)	80 (13)	74 (19)	77 (17)	66 (21)	66 (16)
<b>Emotional Wellbeing</b>	75 (23)	72 (24)	82 (17)	80 (14)	79 (14)	79 (13)	69 (18)	74 (17)
<b>Energy / Fatigue</b>	57 (25)	55 (25)	65 (26)	67 (24)	62 (22)	63 (19)	58 (25)	58 (24)
<b>General Health</b>	66 (23)	70 (23)	75 (18)	76 (18)	66 (16)	66 (19)	62 (24)	62 (24)

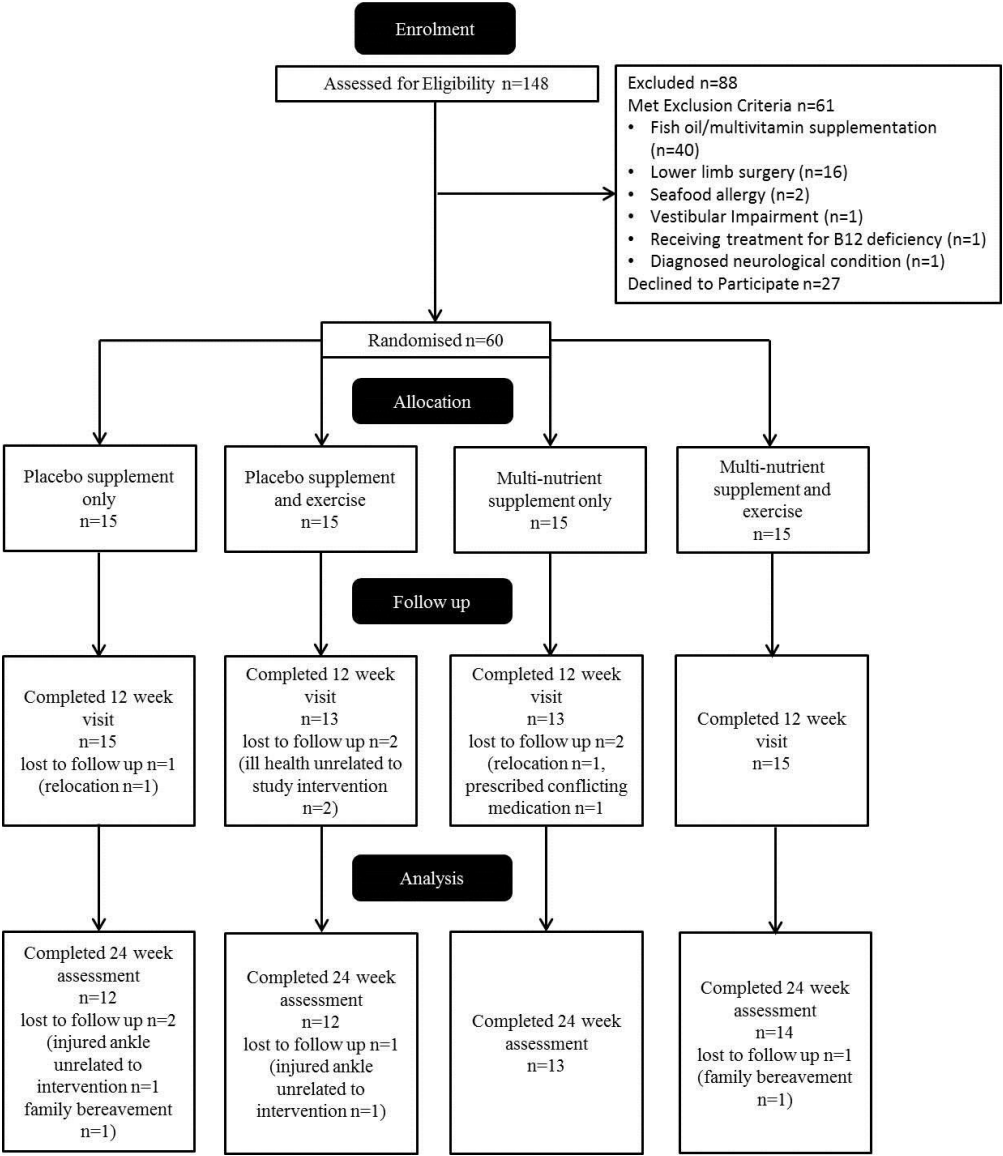
**Supplementary Table 1** Fatty Acid Composition of Placebo Capsules.

Fatty Acid Profile		% Fatty Acid Methyl Ester	Milligram triglyceride per Capsule
14:0	Myristic	0.4	3.3
16:0	Palmitic	7.3	67.8
16:1	Hexadecenoic	0.5	4.2
16:3	Heptadecatrienoic	0.1	0.5
16:4	Hexadecatetraenoic	0.1	0.8
17:0	Heptadecanoic	0.1	0.5
18:0	Stearic	6.6	60.3
18:1 (n-9)	Oleic	72.4	656.5
18:1 (n-7)	CIS-vaccenic	0.8	6.8
18:2 (n-7)	Linoleic	8.2	74.1
18:3 (n-3)	Alpha-linoleic	0.1	1.1
18:4 (n-3)	Octadecatetraenoic	0.1	1.2
20:0	Icosanoic	0.3	2.7
20:1	Icosenoic	0.3	3.0
20:4 (n-6)	Arachidonic	0.0	0.4
20:5 (n-3)	Icosapentaenoic	0.8	6.8
22:0	Docosanoic	0.9	7.6
22:1 (n-11)	Cetoleic	0.1	0.8
22:5 (n-3)	Docosapentaenoic	0.1	0.7
24:0	Tetracosanoic	0.3	2.5
22:6 (n-3)	Docosahexaenoic	0.5	4.3

**Supplementary Table 2** Correlation matrix plotting serum homocysteine against primary and secondary outcome measures.

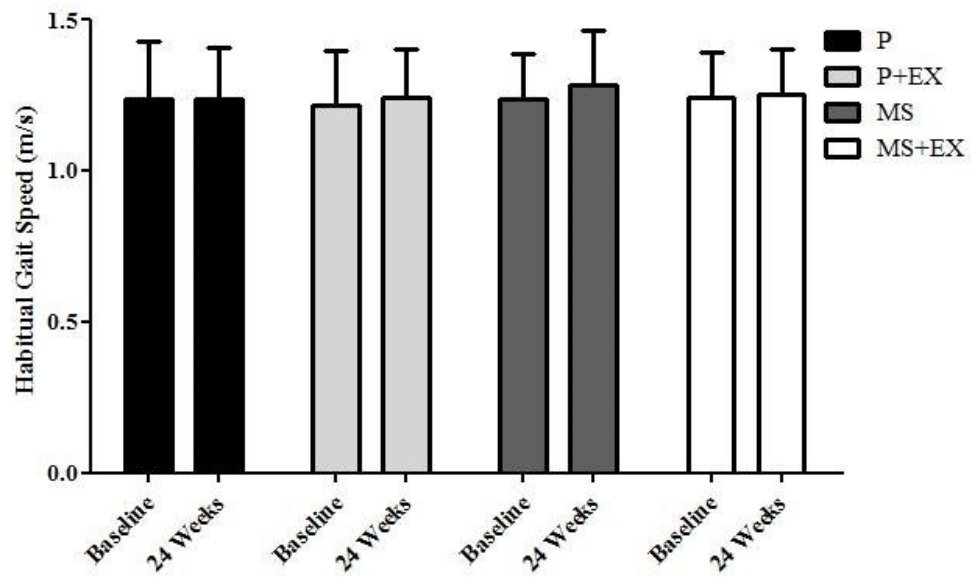
Outcome Measure	Homocysteine Correlation
Habitual Gait Speed (m/s)	R=0.190 ( <i>p</i> =0.197)
Fast Walking Speed (m/s)	R=0.256 ( <i>p</i> =0.079)
Dual Task Gait Speed (m/s)	R=-0.005 ( <i>p</i> =0.975)
DTE on Gait Speed (%)	R=-0.209 ( <i>p</i> =0.155)
Dual Task Variability (%)	R=0.040 ( <i>p</i> =0.788)
FTSTS (s)	R=
Verbal Memory (%)	R=-0.093 ( <i>p</i> =0.528)
SWM (%)	R=-0.194 ( <i>p</i> =0.187)
EF (number of correct connections)	R=0.218 ( <i>p</i> =0.136)
Interference control (ms)	R=-0.158 ( <i>p</i> =0.283)
Physical Function (SF-36 score)	R=0.083 ( <i>p</i> =0.591)
Emotional Wellbeing (SF-36 score)	R=-0.289 ( <i>p</i> =0.057)
Energy/ Fatigue (SF-36 score)	R=0.042 ( <i>p</i> =0.787)
Bodily Pain (SF-36 score)	R=-0.050 ( <i>p</i> =0.749)
General Health Perceptions (SF-36 score)	R=-0.138 ( <i>p</i> =0.373)

For Review Only

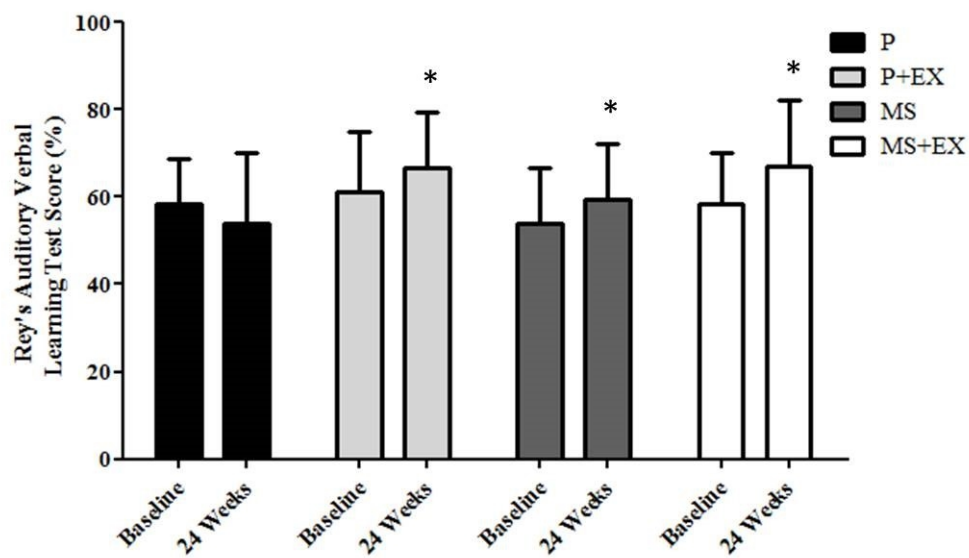


326x376mm (96 x 96 DPI)

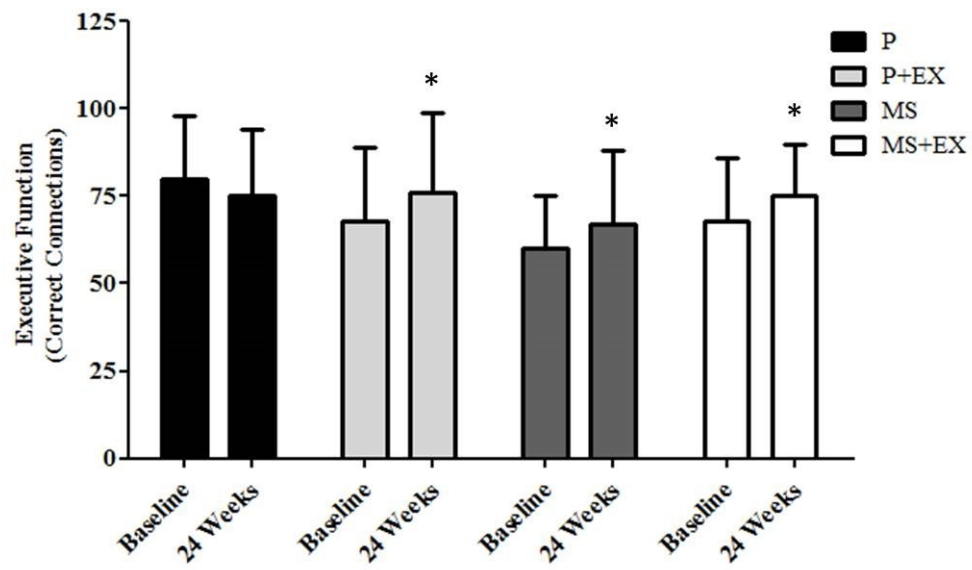




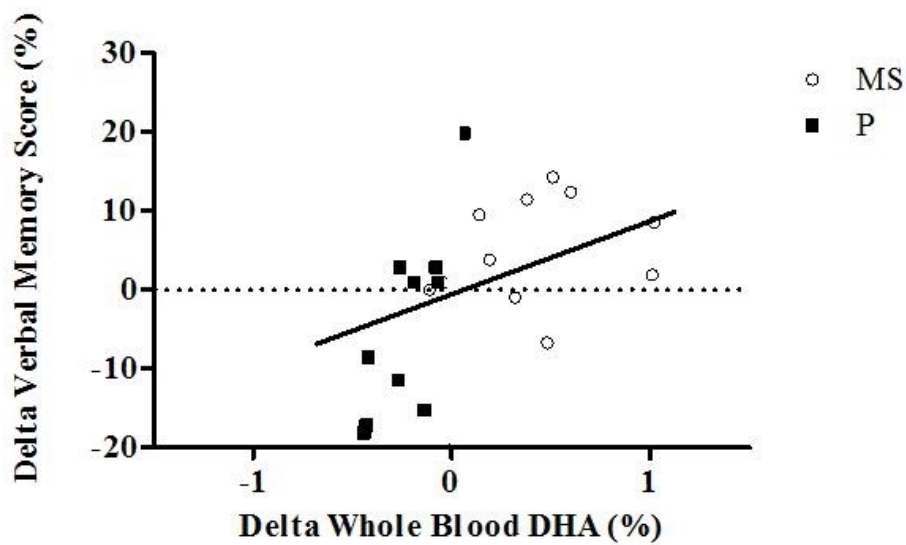
169x103mm (96 x 96 DPI)



275x162mm (96 x 96 DPI)



275x166mm (96 x 96 DPI)



167x102mm (96 x 96 DPI)